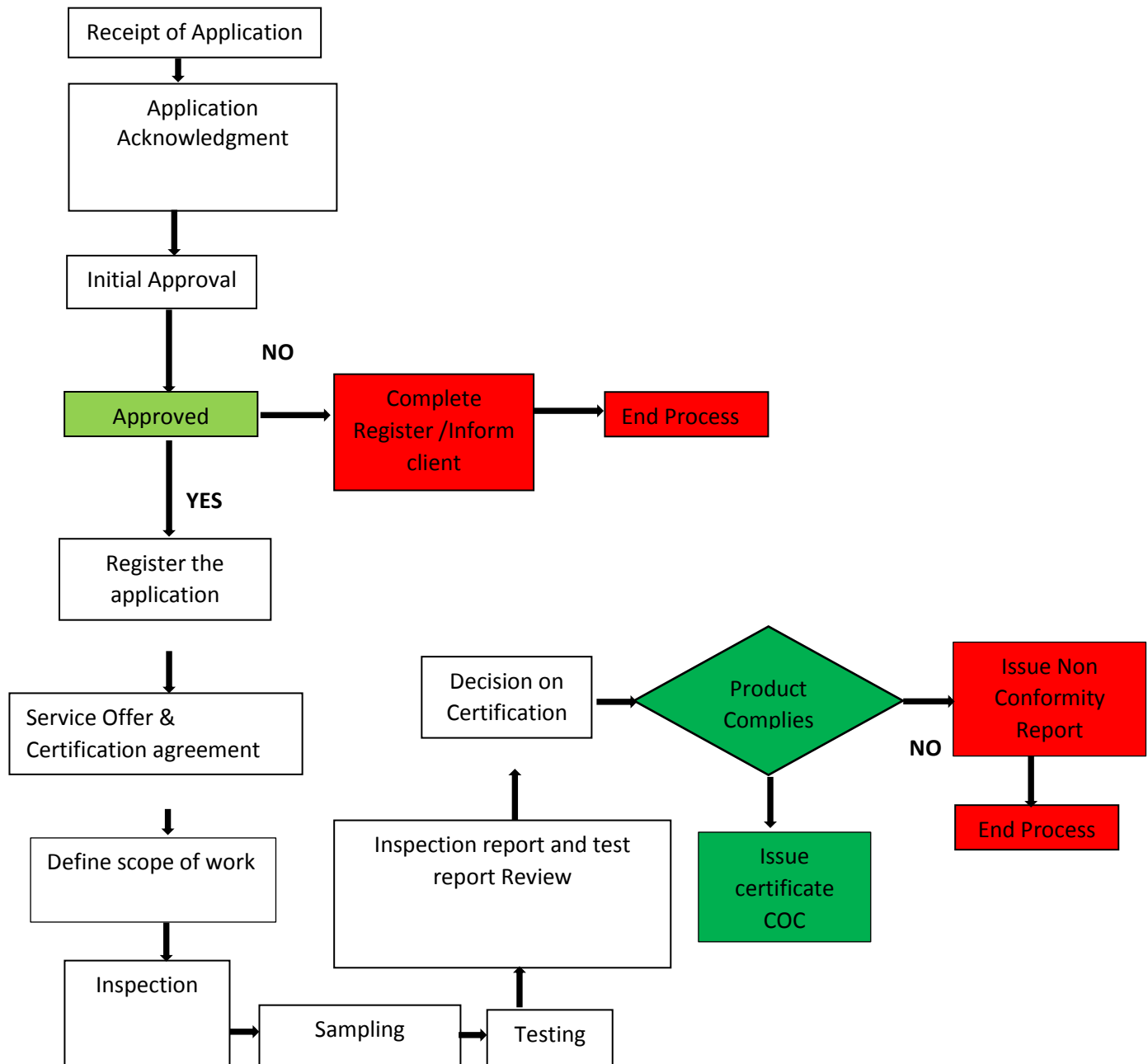
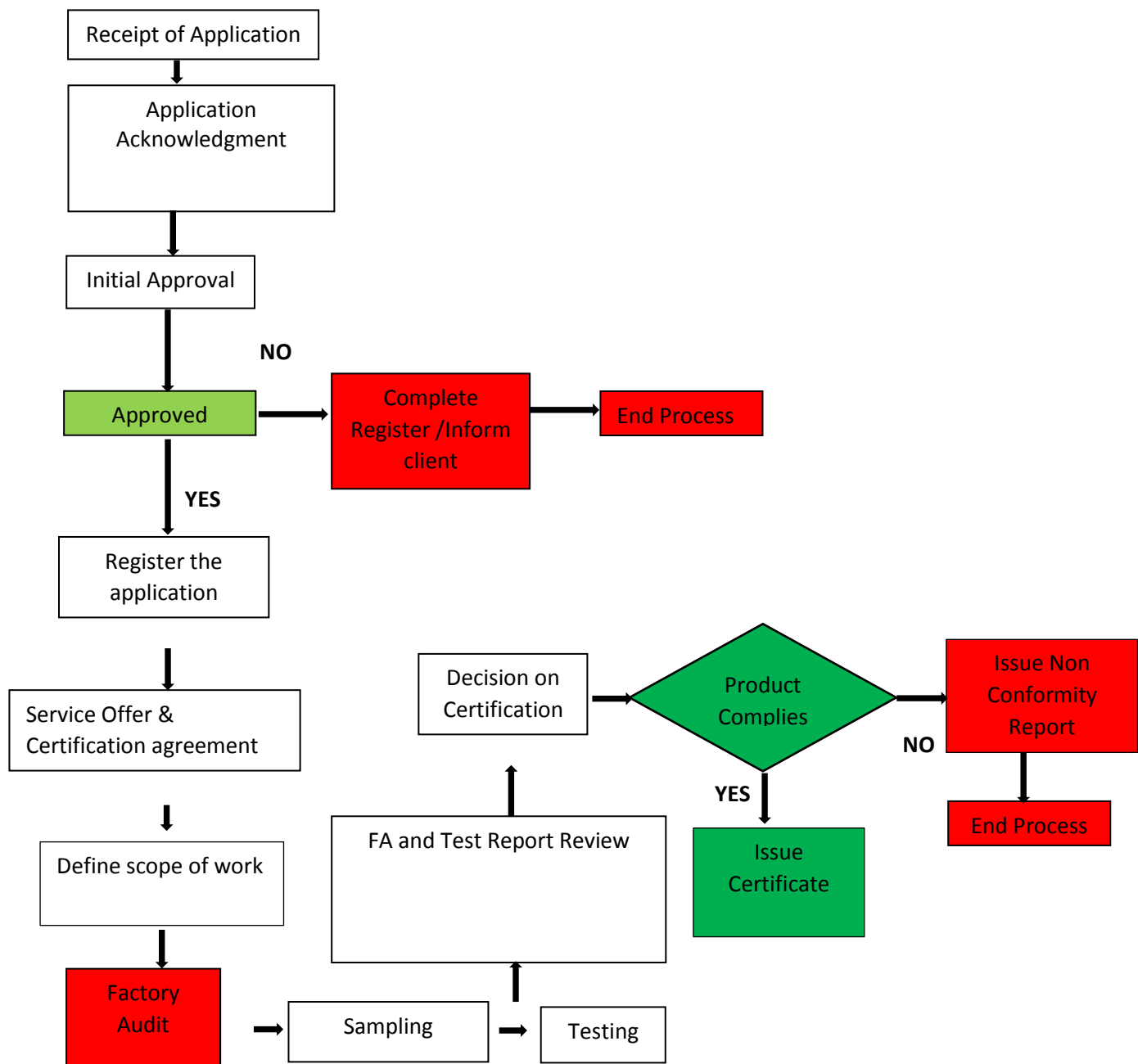


PROCEDURES FOR PRODUCT CERTIFICATION

Type 1a Scheme



Type 3 & Type 5 Scheme



Note: Type 3 – Evaluation of Products and its design, plus factory – initial and routine audits.

Type 5 – The same as Scheme 3 but adding periodic sampling of the product from factory and/or from the market for routine testing.